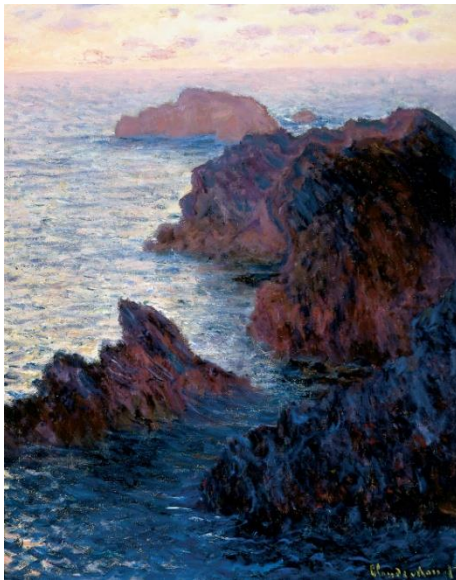


# THE REAL CLAUDE MONET

ART AND LANGUAGE ARTS  
GRADES: K - 4

## BASED ON



Claude Monet (1840-1926), France  
*Rocks at Belle-Ile, Port-Domois*  
Oil on Canvas  
Fanny Bryce Lehmer Endowment and The Edwin and Virginia Irwin  
Memorial, 1985.282

## OBJECTIVES

- Students will read six books about the life of Claude Monet.
- Students will construct a life-size timeline about the artist's life.

## CONCEPT

In this lesson students will research the life of Claude Monet to discover interesting facts about him as a child, adult, and painter. Students do not often have the chance at a young age to conduct artist studies in depth so it is a chance to read quality children's literature, learn research skills, and apply them.

## MATERIALS

- Computer
- Bulletin board paper, paint, paper, and glue for timeline
- [Who Was Claude Monet?](#) By Ann Waldron and illustrated by Stephen Marchesi
- [Claude Monet: Sunshine and Waterlilies](#) written and illustrated by True Kelley
- [The Magical Garden of Claude Monet](#) by Laurence Anholt

- Monet written and illustrated by Mike Venezia
- Linnea in Monet's Garden by Christina Bjork and Lena Anderson
- Claude Monet: The Painter Who Stopped the Trains by P.I. Maltbie and illustrated by Jos A. Smith

## VOCABULARY

*Impressionism*

## PROCEDURE

1. Students will be introduced to Claude Monet through a Google Art tour of some of his paintings.
2. Students will listen to a reading of Monet by the teacher. Discussion will follow.
3. Students will read Who Was Claude Monet? and discuss each chapter through literature circles.
4. The teacher will read-aloud the remaining books and host Socratic Seminars to discuss the information.
5. Students will create a timeline of the artist's life.

## ASSESSMENT

- Students will answer comprehension questions after each reading through a game show format.
- Students will construct a timeline using facts from the books as well as the internet. Students will incorporate pictures to use in the timeline as well. The timeline will be evaluated using a rubric.

## NATIONAL STANDARDS

1. Understand the visual arts in relation to history and culture
2. Describe how people's experiences influence the development of specific artwork
3. Apply a wide-range of strategies to comprehend, interpret, evaluate, and appreciate texts
4. Adjust the use of spoken, written, and visual language to communicate effectively with a wide-variety of audiences

## CURRICULUM CONNECTIONS

There are many curriculum connections in the Monet artist study. Students are reading, researching, speaking, and writing. Students will be using technology in many different ways. Geography, science, math, and art will be connected through discussions about the artist's life.



Claude Monet (1840-1926), France  
*Rocks at Belle-Ile, Port-Domois*  
Oil on Canvas

Fanny Bryce Lehmer Endowment and The Edwin and Virginia Irwin Memorial, 1985.282